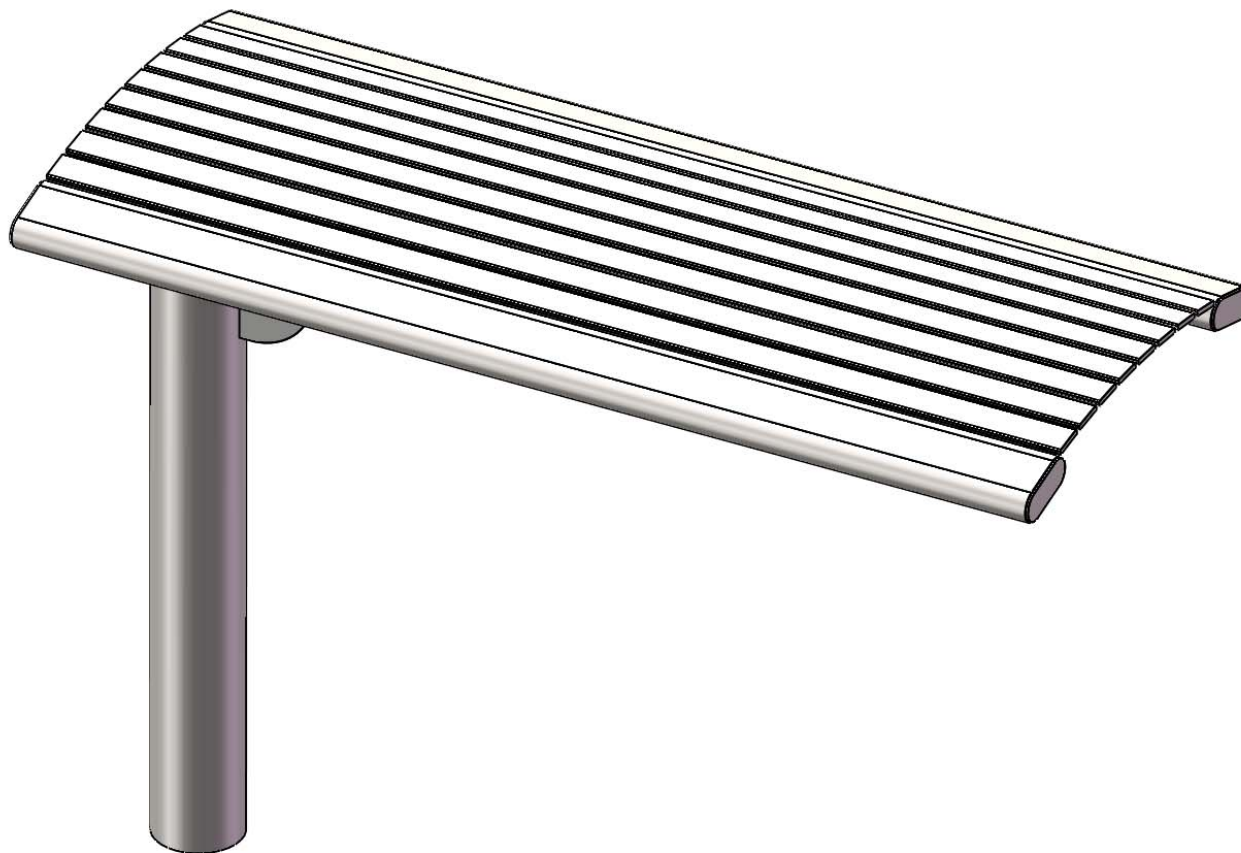


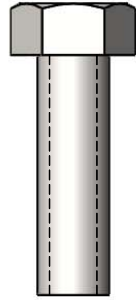
Site Amenities

BY SUPERIOR RECREATIONAL PRODUCTS

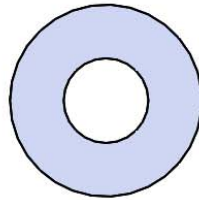


Model # B4ARS-ST-CANT

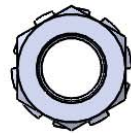
HARDWARE



3/8" x 1-1/4"
MACHINE BOLT



3/8" FLAT
WASHER



3/8" KEPNUT

ULTRA SITE PRODUCT SPECIFICATIONS

66S-HS4 INGROUND MOUNT BENCH

Seat: Is fabricated from 1 ½" x ¼" flat steel strips. Reinforced with 1/4" thick support ribs. End Planks are made from 1-1/2" x 3-1/2" steel oval tubing.

Frame: 4" diameter x 11 gauge structural steel tubing. Attachment plates are 1/4" thick flat steel. All electrically MIG welded.

Coating: Steel is sandblasted to near white condition. Coated with zinc rich epoxy primer and top coated with electrostatic powder coat, oven cured.

Dimensions: 4' inground mounted bench without back. Seat is 20" wide x 48" long. Seat height is 17-5/8" from the ground to the top of the seat. The overall dimensions are 48" x 20" x 35-1/8"

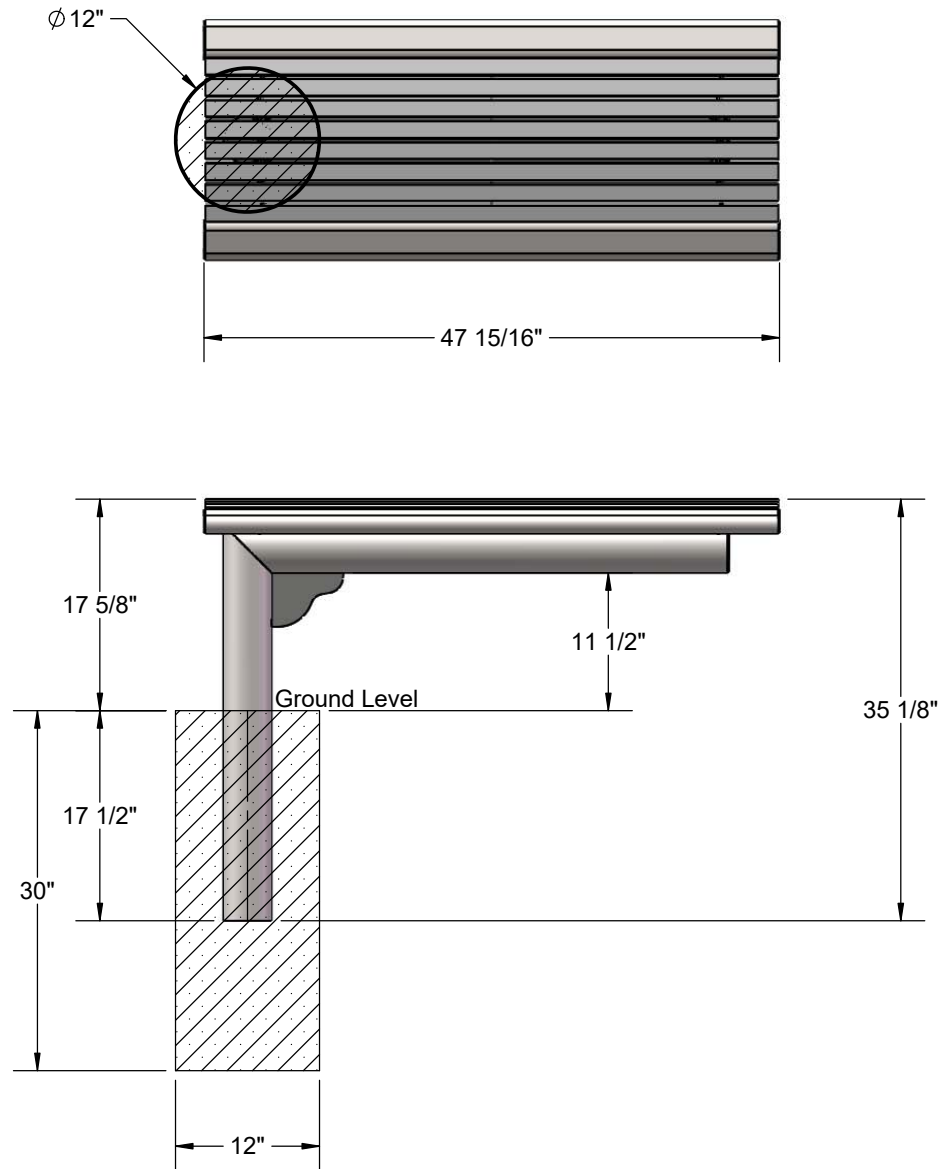
COMPONENTS

Attach the 4' seats to the 66 Bench Legs using specified hardware.



ITEM NO.	PartNo	DESCRIPTION	Qty.
1	01-01-0889	66 Bench Leg - Inground	1
2	01-01-0897	4' horizontal slat seat assembly	1
3	33-02-0008	3/8" Flat Washer (SS)	8
4	33-05-0078	3/8" x 1 1/4" Machine Bolt (SS)	4
5	33-03-0013	3/8" Kep Nut (SS)	4

FOOTING



Estimated Concrete Required:
6 Bags of Concrete Mix

OVERALL DIMENSIONS

