

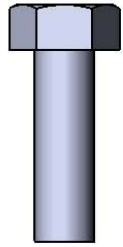
# *Site Amenities*

BY SUPERIOR RECREATIONAL PRODUCTS

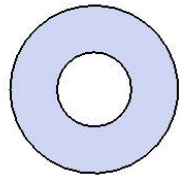


Model # BARSTOOL

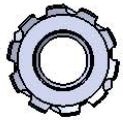
# HARDWARE



5/16" x 1"  
Machine Bolt



5/16" Washer



5/16" Kep Nut

# PRODUCT SPECIFICATIONS

## **BARSTOOL FOOD COURT CHAIR**

Seats: 3/4" #9 steel expanded metal. End plates are made of 7 gauge flat steel plate. Reinforced with 3/16 x 1-1/2" flat strip. Electrically MIG welded.

Coating: Oven fused functionalized polyethylene copolymer-based thermoplastic. Fluidized bed coating application with superior mechanical performance, impact resistance and UV-stability.

Frame: 1-5/16" O.D. x 14 gauge pre-galvanized structural steel tubing. Legs are bent over a mandrel through the bend radius producing a wrinkle free bend. Mounting plates shall be 3/16" thick, laser cut for a precision part. Floor protection shall be supplied by threaded swivel glides with white plastic bases. All electrically MIG welded.

Frame Coating: Electrostatic powder coated application oven cured.

Hardware: All stainless steel hardware fasteners.

Dimensions: Seats are 23-3/4" deep x 18" wide. Seat height is 30", seat back height is 49". Overall dimensions of seat with frame are 23-3/4" x 18".

# COMPONENTS

Attach the 18" Seat to the Frame as shown using specified hardware.



ITEM NO.	PartNo	DESCRIPTION	QTY
1	V956	956 Frame	1
2	T-V18CT-S	18" expanded contour seat	1
3	33-02-0007	5/16" SS Washer	8
4	33-05-0029	5/16" x 1" Machine Bolt (SS)	4
5	33-03-0012	5/16" Kep Nut (SS)	4

# OVERALL DIMENSIONS

