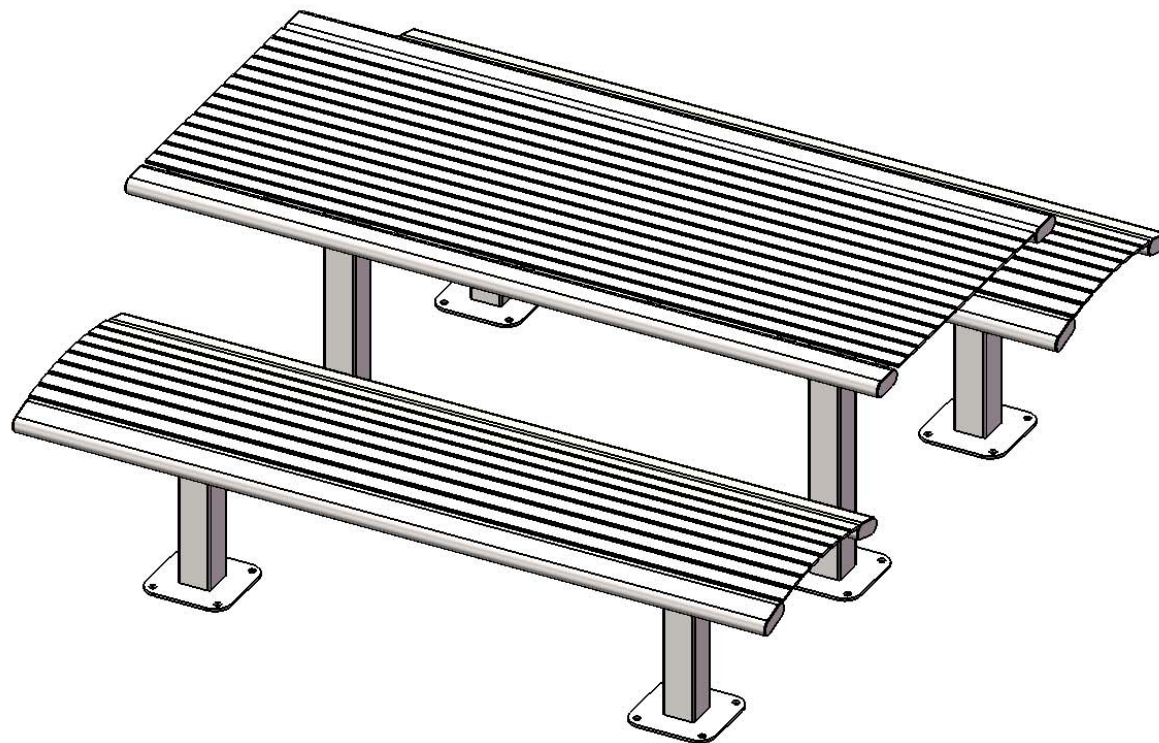


Site Amenities

BY SUPERIOR RECREATIONAL PRODUCTS

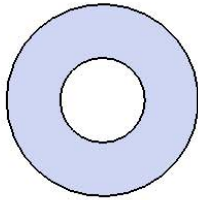


Model #
T6ARPEDSM-ST

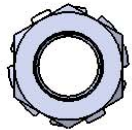
HARDWARE



3/8" x 1"
Machine Bolt

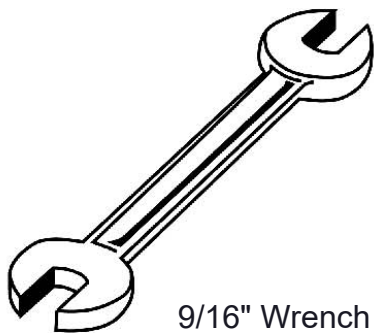


3/8" Flat Washer



3/8" Kep Nut

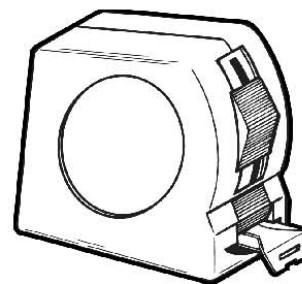
TOOLS REQUIRED



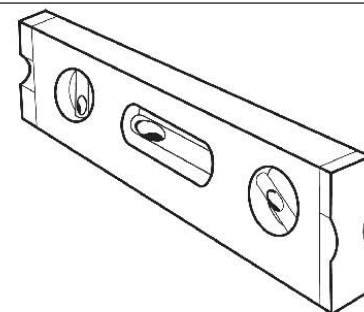
9/16" Wrench



9/16" Socket Wrench



Tape Measure



Level

PRODUCT SPECIFICATIONS

T6ARPEDSM-ST ARHCES SURFACE MOUNT PICNIC TABLE

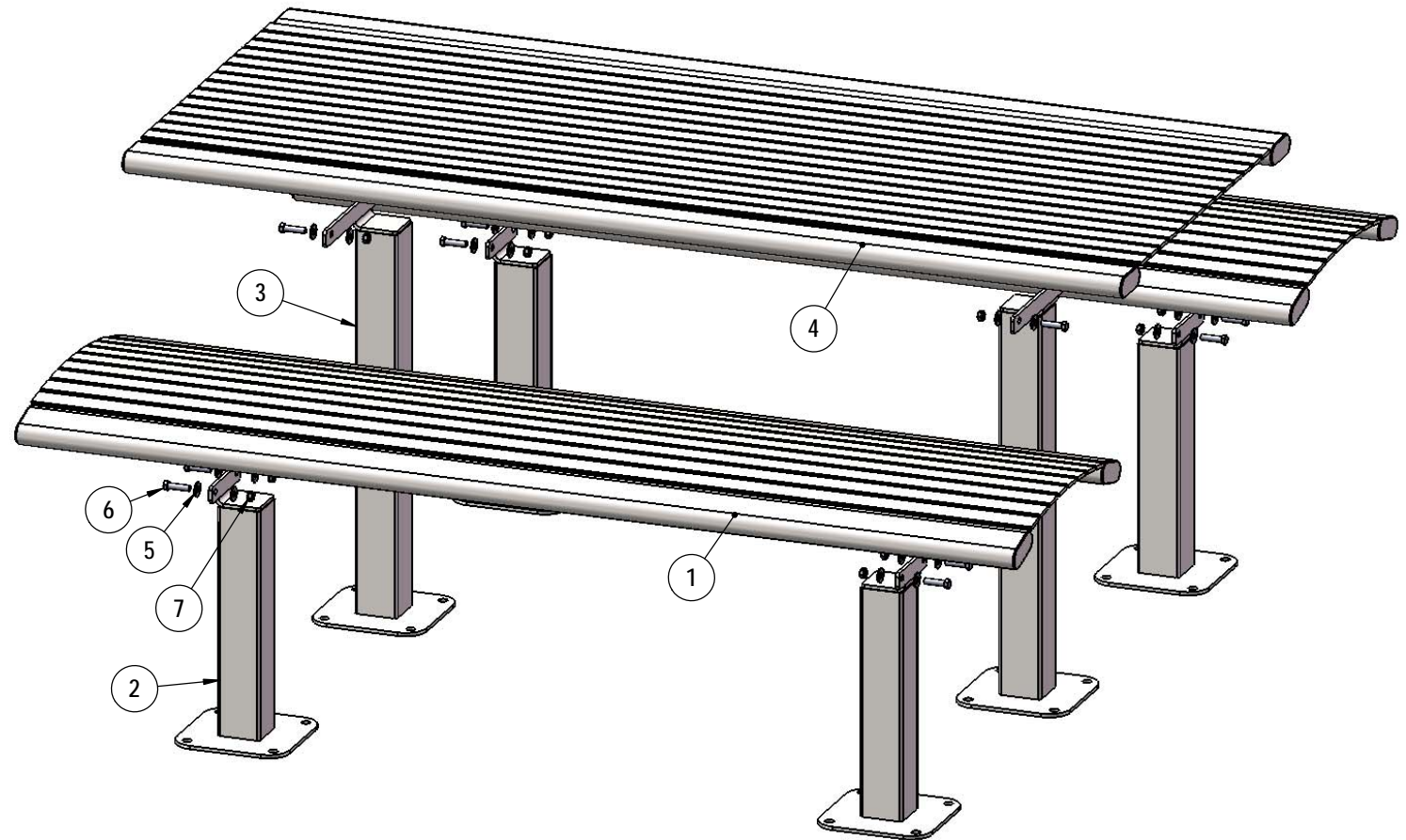
Seat: Shall be fabricated from 1 ½" x ¼" flat steel strips. Reinforced with 1/4" thick support ribs. End Planks are made from 1-1/2" x 3-1/2" steel oval tubing.

Frame: 3" x 3" square x11 gauge structural steel tubing. Surface Mount (SM) plates are made from 1/4" thick material. All electrically MIG welded.

Coating: Metal is sandblasted to near white condition. Coated with zinc rich epoxy primer and top coated with electrostatic powdercoat, oven cured.

Dimensions: 6' surface mounted table without back. Seats are 20" wide x 71" long. Seat height is 18-7/8" from the ground. Table height is 30" from the ground. The overall dimensions are 71" x 72" x 30"

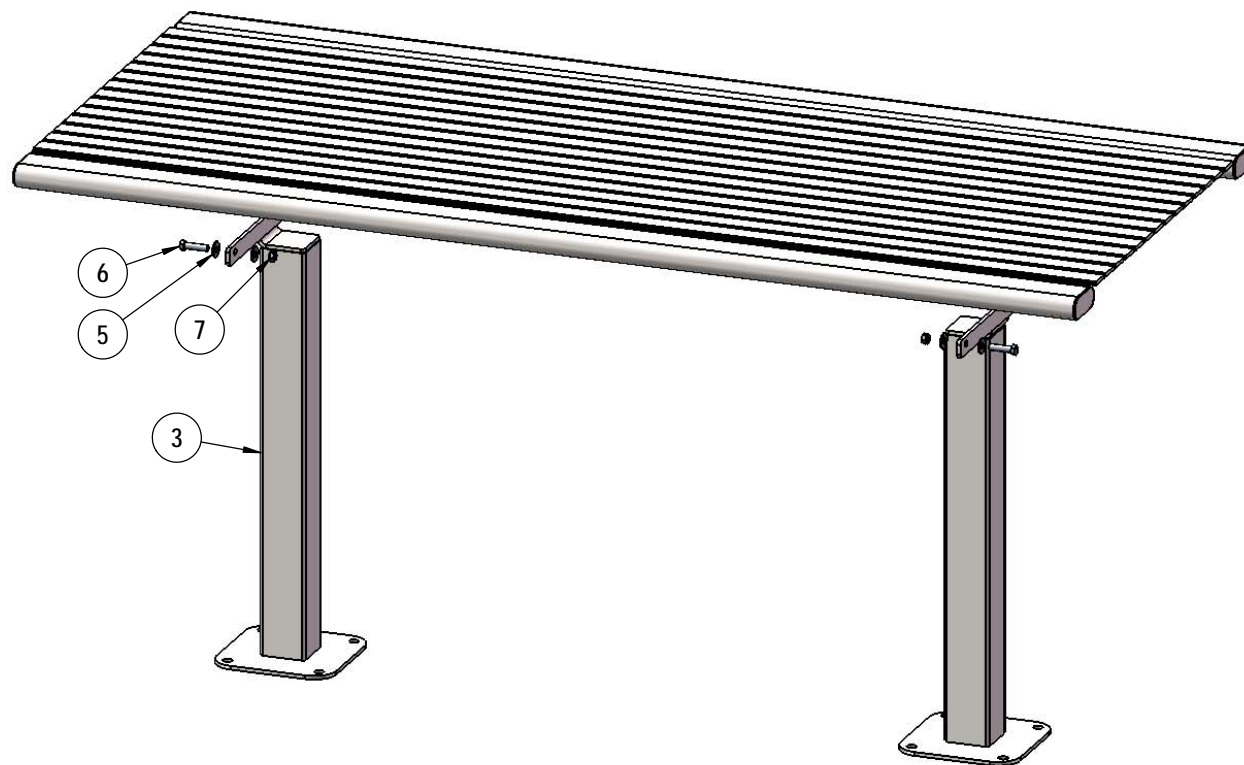
COMPONENTS



ITEM NO.	PartNo	DESCRIPTION	QTY
1	P-01-01-0415	6' Richmond Series Seat	2
2	P-01-01-0417	82 Series SM Leg	4
3	01-04-0488	63 Square Leg Assembly - SM	2
4	01-04-0492	63 Table Top	1
5	33-02-0008	3/8" Flat Washer (SS)	24
6	33-05-0049	3/8" x 1 1/2" Machine Bolt (SS)	12
7	33-03-0013	3/8" Kep Nut (SS)	12

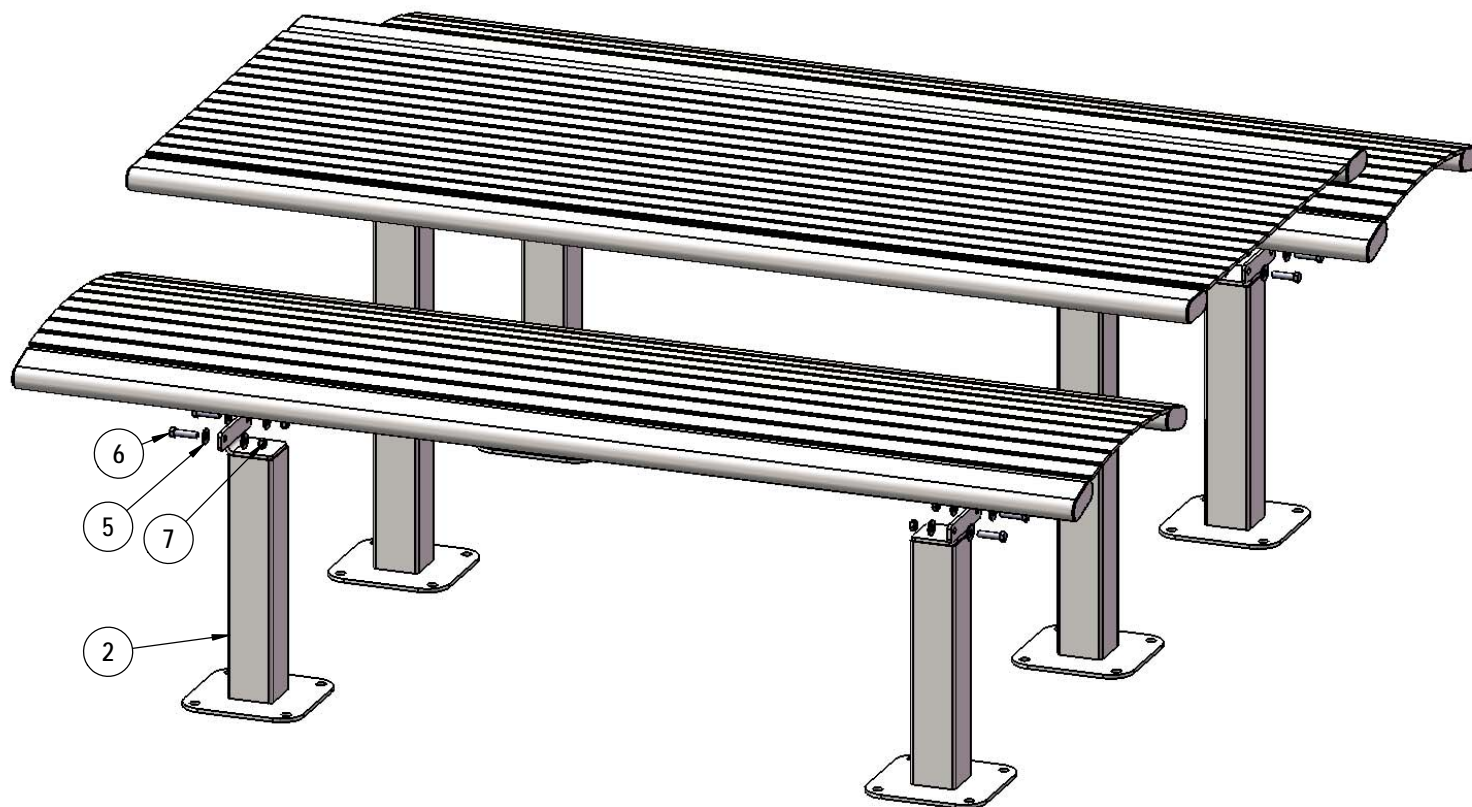
Recommended Surface Mount Hardware:
3/8" x 3-1/2" Concrete Expansion Anchor Bolts
(Not Included)

STEP 1



Attach the Table Top to the SM Table Legs using the specified hardware.

STEP 2



Attach the seats to the Seat Legs using the specified hardware.

OVERALL DIMENSIONS

